

# The Victorians

## Learning Objective:

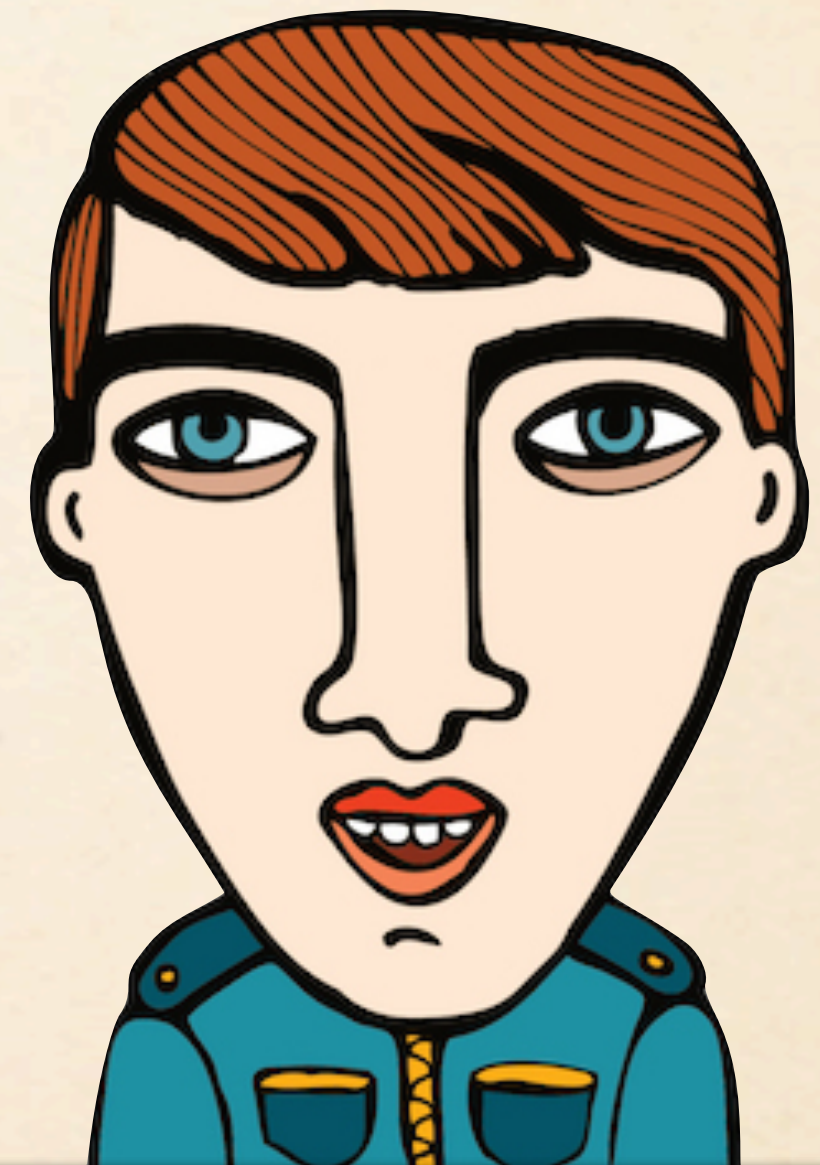
To find out which countries were part of the British Empire in the Victorian era and to be able to locate them on a world map.

NEXT





How would you  
define an  
empire?



Definition:

BACK

NEXT



An empire is a group of countries or states that are controlled by a monarch, emperor or empress.

European countries had been competing to control countries in other continents for hundreds of years but during the Victorian era Britain became the most powerful country in the world. It took control over lots of different countries all over the globe and by the death of Queen Victoria in 1901, the British Empire covered more than a fifth of the earth's surface.



This picture shows a Canadian stamp. All the red areas on the world map are countries controlled by the British Empire.

BACK

NEXT



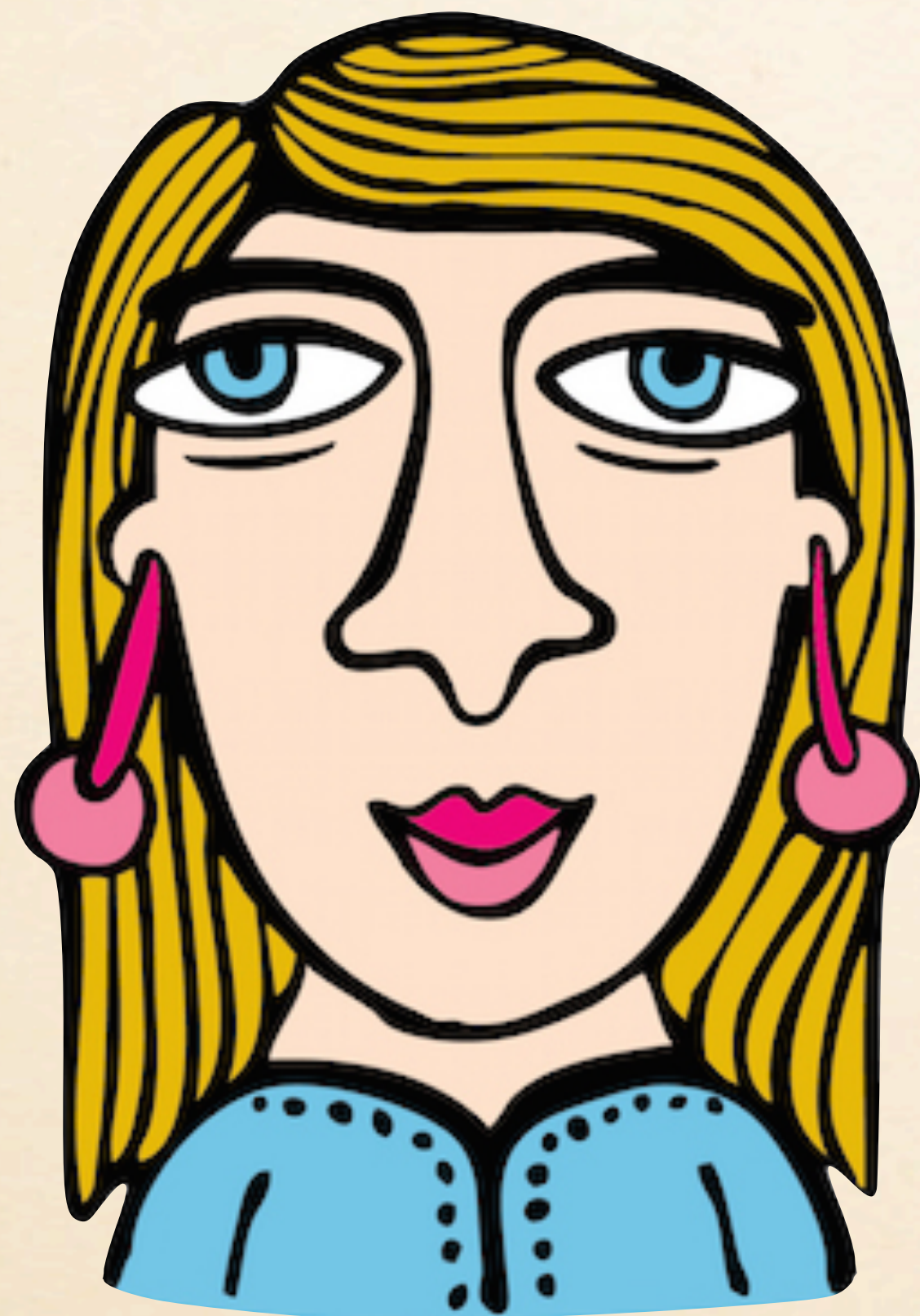


This map shows the territories of the British Empire in 1897. At this time there was a population of around 38,000,000 people in Britain but the population of the British Empire was around 367,000,000 people.

BACK

NEXT





Do you know which  
countries were part of  
the British Empire during  
the Victorian era and when  
they joined?  
Let's find out!

BACK

NEXT



In 1867, Canada became part of the British Empire. Can you find Canada on the map? Which continent is Canada in?



BACK

NEXT



Canada is a country in North America. Were you right?



BACK

NEXT



India became a part of the British Empire in 1876. Where is India on the map?  
Which continent is India in?



BACK

NEXT



India is a country in Asia. Were you right?



BACK

NEXT



Egypt became a part of the British Empire in 1881. Where is Egypt on the map?  
Which continent is Egypt in?



BACK

NEXT



Egypt is a country in Africa. Were you right?



BACK

NEXT



Australia became a part of the British Empire in 1770. Where is Australia on the map?



BACK

NEXT



Australia is its own continent. Were you right?



BACK

NEXT



Kenya became a part of the British Empire in 1885. Where is Kenya on the map?  
What continent is it in?



BACK

NEXT



Kenya is a country in Africa. Were you right?



BACK

NEXT



Jamaica became a part of the British Empire in 1655. Where is Jamaica on the map? What continent is it in?



BACK

NEXT



Jamaica is an island in North America. Were you right?



BACK

NEXT